



Brilliant with Balloons

featuring
Sempertex® Balloons

ENCHANTING LINK-O-LOON® CEILING DRAPE



Taught by
JAN IIAMS
Betallic

To keep assembly time to a minimum,
gather the materials and read through
the instructions before beginning.

LABOR

About 30 minutes

MATERIALS

- 16 5" Pastel Dusk Rose Sempertex latex balloons #51515
- 12 5" Pastel Dusk Laurel Green Sempertex latex balloons #51509
- 13 5" Pearl White Sempertex latex balloons #51061
- 1 24" Pearl White Sempertex latex balloon #59061
- 6 160 Fashion White Sempertex latex balloons #57602
- 9 260 Pastel Dusk Laurel Green Sempertex latex balloons #57509
- 36 12" Pearl White LINK-O-LOON® Sempertex latex balloons #54061
- 3 Clik-Clik Magnets
MagPole
UGlu Dashes or Clik-Clik Balloon Bond Tape



INSTRUCTIONS

1. Fully inflate the 24" Pearl White balloon, and tie. Tie an uninflated 260 to the knotted neck of the 24" balloon.



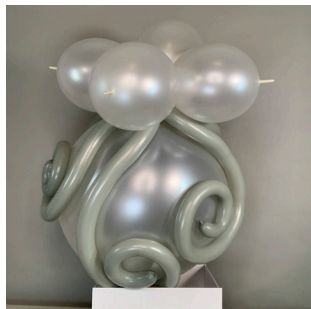
2. Inflate and curl six 260 Pastel Dusk Laurel Green, and tie into a cluster of six. Tie the cluster to the neck of the 24" balloon.



3. Attach the curled shapes as desired to the surface of the 24" with adhesive dashes or tape.



4. Inflate four 12" Pearl White LINK-O-LOON® to 9". Tie the balloons into two duplets, then wrap into a quad. Tie the quad to the neck of the 24" Pearl White balloon.



5. Inflate four 5" Pearl White balloons to 5". Tie the balloons into two duplets, then wrap into a quad. Tie the quad to the top of the 9" LINK-O-LOON® quad.

6. Inflate four 5" Pastel Dusk Rose balloons to 4". Make a quad and tie it on top of the 5" Pearl White quad.

7. Inflate four 5" Pastel Dusk Laurel Green balloons to 3". Make a quad and tie it on top of the 4" Pastel Dusk Rose quad.

8. Inflate four 5" Pearl White balloons to 2.5". Make a quad and tie it on top of the 3" Pastel Dusk Laurel Green quad. Tie on a Clik-Clik magnet.



9. Make two 2" single bubbles using 5" Pearl White balloons. Squeeze the air into the ends, knot tightly, and tie the bubbles to two of the LINK-O-LOON® in the quad from Step 4.



10. Inflate 10 5" Pastel Dusk Rose balloons to 4", and tie into two clusters of five balloons. Wrap each cluster around the 2" bubbles from Step 9 and lay flat to make flower shapes.



11. Inflate 10 12" Pearl White LINK-O-LOON® to 9", and tie into a chain. Repeat to make a second chain.

12. Inflate six more 12" LINK-O-LOON® in the following descending sizes: 8½", 8", 7½", 7", 6½", and 6", and tie into a chain. Repeat to make a second chain. Add these chains to the 9" LINK-O-LOON® chains.



13. Inflate four 5" Pastel Dusk Laurel Green balloons to 3", and make a quad. Repeat to make a second quad. Wrap the quads onto the LINK-O-LOON® chains between the 6th and 7th LINK-O-LOON® from the end of the chain. Move all four balloons to one side of the chain to create a draped angle. Tie a Clik-Cik magnet to both quads. Set both LINK-O-LOON® chains aside for Step 17.

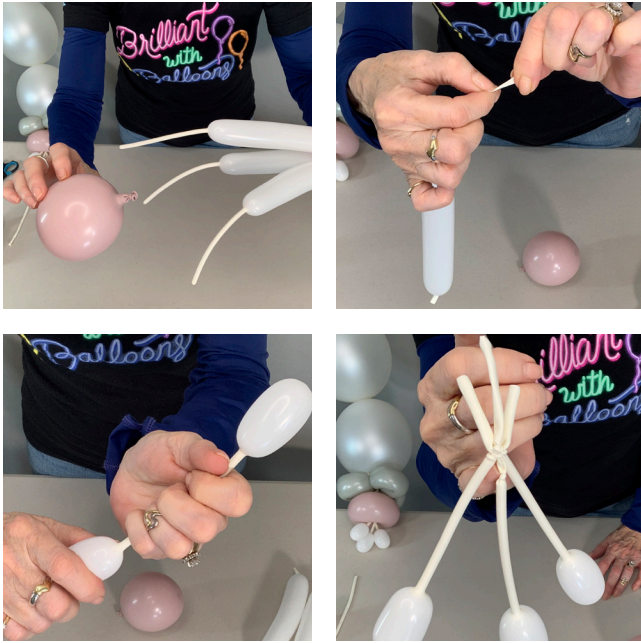


14. Make "leaves" for both chain tip accents: Inflate a 260 Pastel Dusk Laurel Green, leaving about 5 inches uninflated, and tie. Measure 4 inches from the nozzle end of the balloon, then fold that section in half and twist to make a loop "leaf". Make two more loops to create a set of three "leaves," then knot and remove the excess 260. Repeat to make a second set of leaves.



15. Inflate two single 5" Pastel Dusk Rose balloons to 2", and tie each close to the nozzle end. Set aside for Step 16.

16. Make bubbles on the tip ends of six 160 Fashion White balloons. To begin, "snap" the tip end of each balloon several times to pre-stretch and soften. Partially air fill each balloon and force a small amount of air gently into the tip end of the balloon to make a 1" bubble. Tie each 160 separately 3" below the bubble, then tie the knotted ends of 160s into two sets of three about 3" below the bubbles. Remove the excess 160 below the knots, and save for Step 18.



17. Create an apple twist with both undersized Pastel Dusk Rose and 160 bubbles by pressing the knotted 160s into the nozzle end and pushing the knots to the opposite end of the 5" latex.



18. Grip the knots and twist to create the 5" apple shape, wrap and tie a section of 160 around the knots with the 160 bubbles secured in place. Squeeze, if needed, to make the apple shape evenly filled. Tie each to 260 Pastel Dusk "leaves" and tie onto the ends of the LINK-O-LOON® chains.



19. Tie the LINK-O-LOON® chains from Step 12 to the two exposed LINK-O-LOON® quad tips above the 24" balloon to make drape swags on both sides.

20. Install the ceiling drape using a MagPole by attaching the Clik-Clik magnets equal distance apart to magnetic points on the ceiling with the chains draped to each side.

Design Options

Make four chains instead of two to create a canopy formation.

Insert a battery-powered light inside the 24" balloon for a special effect.



Find more resources for balloon professionals at [Betallic.com](https://www.betallic.com)

2326 Grissom Drive St. Louis, MO 63146 | (314) 991-8800 | (800) 325-0185 | F (314) 991-1943 | sales@betallic.com | [betallic.com](https://www.betallic.com)

©2023 Betallic, L.L.C. All rights reserved. No part may be reproduced without permission from Betallic, L.L.C. Betallic, L.L.C. cannot be responsible for any typographical errors. Betallic, L.L.C.'s liability on defective merchandise is limited to the replacement of said merchandise, not any losses incurred due to the failure of the product.

