



Brilliant with Balloons

featuring
Sempertex® Balloons

NEW YEAR MAGIC MEGALOON ARCH



Taught by
JAN IIAMS
Betallic

To keep assembly time to a minimum,
gather the materials and read through
the instructions before beginning.

LABOR

About 75 minutes

MATERIALS

- 16 5" Reflex Gold Sempertex latex balloons #51148
 - 24 11" Reflex Blue Sempertex latex balloons #53143
 - 10 11" Reflex Violet Sempertex latex balloons #53144
 - 2 18" Crystal Clear Sempertex latex balloons #55011
 - 42 260 Reflex Gold Sempertex latex balloons #57348
 - 2 260 Reflex Violet Sempertex latex balloons #57344
 - 2 260 Reflex Blue Sempertex latex balloons #57343
 - 2 34" 2024 Opal Rainbow Megaloon Pack #15024RW
 - 2 Base plates and poles
- Clear packing tape
UGlu Dashes
Optional gold confetti
Monofilament line
Helium



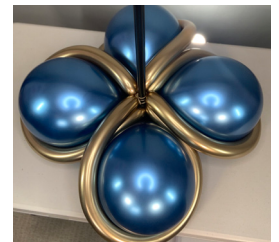
INSTRUCTIONS

For each Column:

1. Inflate four 11" Reflex Blue to 9", wrap into a quad and secure onto the pole above the base plate.



2. Inflate four Reflex Gold 260s, leaving 2" uninflated, and tie. Tie the 260 necks to each balloon neck in the 9" Reflex Blue quad, then "drape" each 260 around one of the 9" Reflex Blue balloons as shown and tie it back to the necks. Snip off any excess 260.



3. Inflate four 11" Reflex Violet to 8", wrap into a quad and secure onto the pole above the Reflex Blue quad.



4. Add Reflex Gold 260 drapes, securing each Reflex Gold 260 around the balloons.



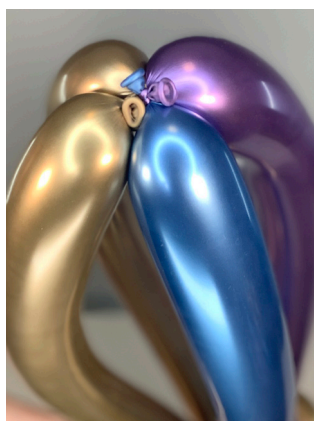
5. Inflate four 11" Reflex Blue to 7", wrap into a quad and secure onto the pole above the Reflex Violet quad.



6. Add Reflex Gold 260 drapes, securing each Reflex Gold 260 around the balloons.

7. Inflate four 5" Reflex Gold to 5", wrap into a quad and secure onto the pole above the Reflex Blue quad.

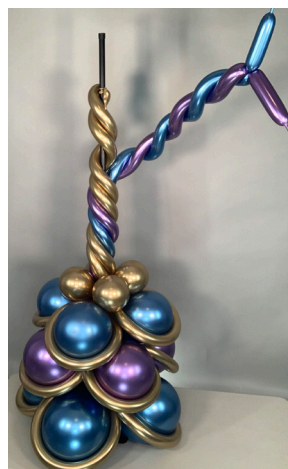
8. Inflate two 260 Reflex Gold, one 260 Reflex Violet and one 260 Reflex Blue, leaving 2" uninflated on each, and tie into a quad. Slide the quad under the 5" Reflex Gold quad and pull each 260 up between the balloons in the 5" quad.



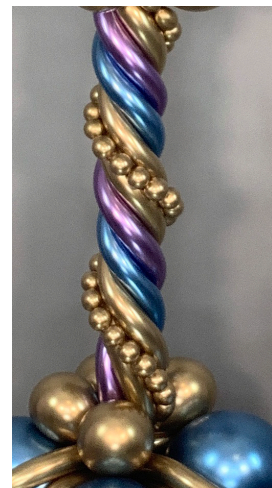
9. Twist the two Reflex Gold 260s together and twist at the top to hold them in formation. Repeat with the Reflex Violet and Reflex Blue 260s.

10. Spiral the Reflex Gold twisted 260s around the pole and wrap/tie around the pole to hold in place, leaving 8" at the top of the pole for additional round quads.

11. Wrap the Reflex Blue and Reflex Violet twisted 260s tightly into the space between the Reflex Gold 260s. Wrap and tie onto the pole to secure, then snip off any excess 260.



12. Inflate 1-2 Reflex Gold 260s and make a chain of 1" bubbles in each. Tie the bubble chain into the column on top of the other 260 Reflex Gold balloons.



13. Inflate four 5" Reflex Gold to 5", wrap into a quad and secure onto the pole above the Reflex 260 section.



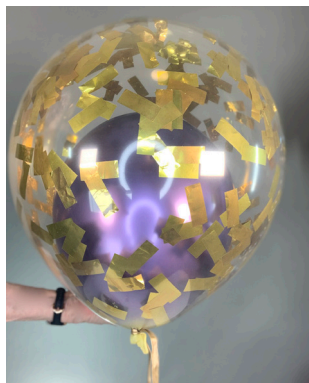
14. Inflate four 11" Reflex Blue to 7", wrap into a quad and secure onto the pole above the Reflex Gold quad. Add Reflex Gold 260 drapes, securing each Reflex Gold 260 around the balloons.



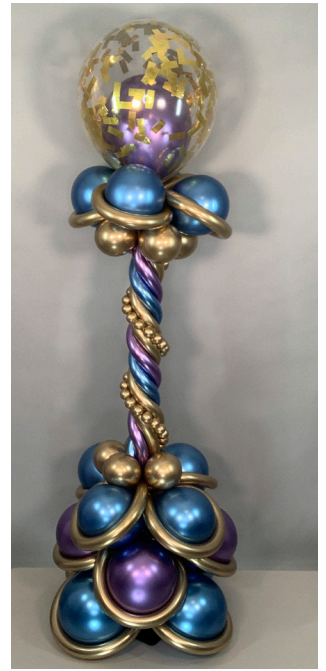
15. Double stuff an 11" Reflex Violet into the 18" Crystal Clear balloon. If desired, insert confetti inside the 18" Crystal Clear before double stuffing.



16. Air inflate the 18" to about 2/3 full, then fill the inside 11" Reflex Violet balloon fully and tie the necks together. Rub the 18" Crystal Clear balloon to create friction to make the confetti adhere to the inside surface.

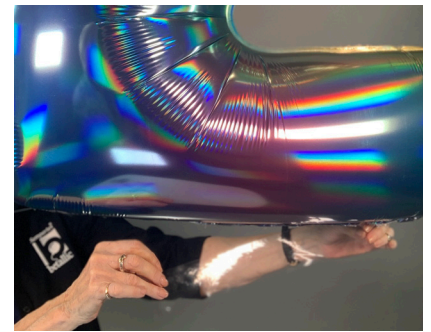
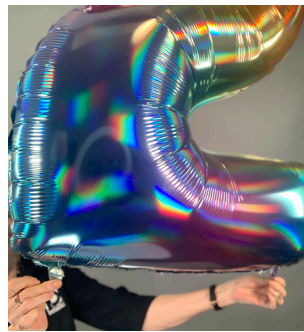


17. Tie the 18" Double Bubble to the top of the Column using a 260.



To add the Megaloons:

1. Helium inflate the 34" Opal Megaloons. Secure each of the bottom tabs onto monofilament line using clear packing tape. This will allow you to slide the Megaloons to position them. To secure each number in place, add longer strips of clear packing tape along the bottom of the Megaloons.



2. Add small 5" latex balloon accents with matching colors using UGLu Dashes or another adhesive. Tie each end of the monofilament line to the pole clusters.

3. Add 260 curls to the exposed line, if desired.

— PRO TIPS —

Treat the latex balloons with HI-SHINE spray to maintain the Crystal Clear and Reflex finishes.

Check out the wide variety of Betallic Megaloons colors and patterns at betallic.com.



Find more resources for balloon professionals at Betallic.com

2326 Grissom Drive St. Louis, MO 63146 | (314) 991-8800 | (800) 325-0185 | F (314) 991-1943 | sales@betallic.com | betallic.com

©2023 Betallic, L.L.C. All rights reserved. No part may be reproduced without permission from Betallic, L.L.C. Betallic, L.L.C. cannot be responsible for any typographical errors. Betallic, L.L.C.'s liability on defective merchandise is limited to the replacement of said merchandise, not any losses incurred due to the failure of the product.

